



View thousands of Crane Specifications on FreeCraneSpecs.com

80HX Series

TELESCOPIC BOOM LIFTS



**Extend-A-Reach for
Added Versatility**



**Oscillating Axle for
Uneven Terrain**



**Proven Performance
and Reliability**

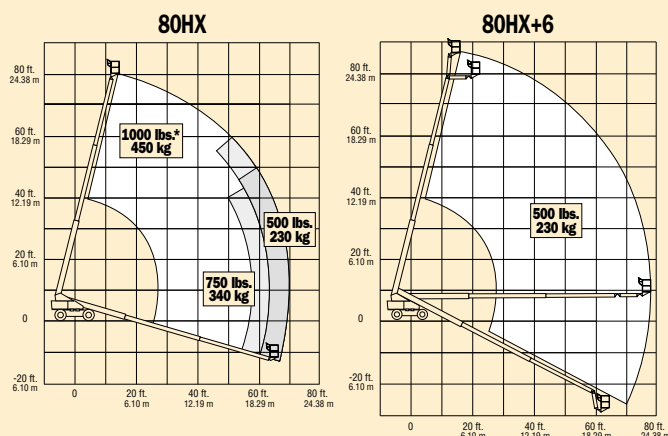
**80HX
80HX+6**



JLG®

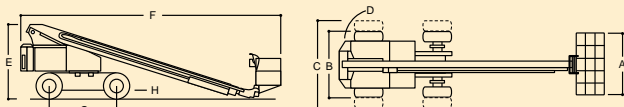


JLG MODEL 80HX & 80HX+6



REACH SPECIFICATIONS

Platform Height (80HX)	80 ft. (24.38 m)
(80HX+6)	86 ft. (26.21 m)
Horizontal Outreach (80HX)	70 ft. 7 in. (21.51 m)
(80HX+6)	76 ft. 11 in. (23.44 m)
Below Ground Reach (80HX+6)	21 ft. 8 in. (6.6 m)
Swing	360° Continuous
Platform Capacity-Restricted (80HX)	1000/750 lbs. (450/340 kg)
Platform Capacity-Unrestricted (80HX)	500 lbs. (230 kg)
Platform Capacity (80HX+6)	500 lbs. (230 kg)
Platform Rotator	180° Hydraulic
Jib (Range of Articulation) (80HX+6)	6 ft. (1.83 m) 95° (+15, -80)



DIMENSIONAL DATA

A. Platform Size (80HX)	36 x 96 in. (0.91 x 2.44 m)
(80HX+6)	36 x 72 (0.91 x 1.83 m)
B. Overall Width (Axles Retracted)	8 ft. 2 in. (2.49 m)
C. Overall Width (Axles Extended)	10 ft. (3.05 m)
D. Tailswing	2 ft. 11 in. (89 cm)
E. Stowed Height	9 ft. 7 in. (2.92 m)
F. Stowed Length (80HX)	33 ft. 7 in. (10.24 m)
(80HX+6)	36 ft. 9 in. (11.2 m)
G. Wheelbase	10 ft. (3.05 m)
H. Ground Clearance	10 in. (25 cm)
Gross Vehicle Weight* (80HX)	31,800 lbs. (14,428 kg)
(80HX+6)	36,900 lbs. (16,742 kg)
Max. Ground Bearing Pressure (80HX)	103 psi (7.2 kg/cm ²)
(80HX+6)	118 psi (8.3 kg/cm ²)

CHASSIS

Drive Speed 2WD	3.5 mph (5.6 km/h)
Drive Speed 4WD	2.8 mph (4.5 km/h)
Gradeability 2WD/4WD	25%/35%
Turning Radius, Axles Retracted	
2WS (Inside/Outside)	17 ft. (5.18 m) / 23 ft. 8 in. (7.21 m)
4WS (Outside)	13 ft. 8 in. (4.17 m)
Turning Radius, Axles Extended	
2WS (Inside/Outside)	16 ft. 2 in. (4.93 m) / 25 ft. 4 in. (7.72 m)
4WS (Outside)	14 ft. 5 in. (4.39 m)
Axle Oscillation	8 in. (20 cm)
Tire Size/Type (80HX)	15 x 19.5 Lug Tread
(80HX+6)	15 x 19.5 Foam Filled

POWER SOURCE

Dual Fuel Engine	Ford LRG-425 70 hp (52 kW)
Diesel Engine	Deutz F4L912 70 hp (52 kW)
Fuel Tank Capacity	26 gal. (98 L)
Hydraulic Reservoir	55 gal. (208 L)
Auxiliary Power	12V DC

*Certain options or country standards will increase weight

PERFORMANCE FEATURES

Standard Features

Hydraulic Extendible Axles (Front & Rear)
36 x 96 in. (0.91 x 2.44 m) Platform
Inward Swinging Gate
180 Degree Hydraulic Platform Rotator
110V-AC Receptacle On Platform
5 Degree Tilt Indicator Light

Rim Protector Lug Tread Tires
12V-DC Auxiliary Power
Proportional Controls
Lifting/Tie Down Lugs
Hourmeter

Available Options

36 x 72 in. (0.91 x 1.83 m) Platform
Minimum Underhang Mount¹
Platform Work Lights
1/2 in. (1.3 cm) Air Line to Platform
"Soft Touch" System 6 ft. (1.83 m)²
Four-Wheel Steer³
Foam Fill for Tires
2500W Generator
Head and Tail Lights
Tow Package
Front Chassis Jack
Proportional Telescope⁴
5 Degree Tilt Alarm
Travel Alarm
All Motion Alarm
Flashing Amber Beacon
Alarm Package⁵

43.5 lb. (19.73 kg) Propane Tank
Engine Distress Warning⁶
Cold Weather Start Kit (Ford)⁷
Cold Weather Start Kit (Deutz)⁸
Hostile Environment Kit⁹

1. Reduces platform height 18 in. (46 cm).
2. Available on 80HX+6 only.
3. Not available with oscillating axle.
4. Standard on 80HX+6. Includes 5 degree tilt, flashing amber beacon & all-motion alarm.
5. Includes flashing beacon & all-motion alarm.
6. Low oil pressure and high coolant temperature alarms.
7. Includes engine block heater, battery heater, oil manifold heater and oil tank heater.
8. Includes ether assist, battery heater, oil manifold heater and oil tank heater.
9. Includes console cover, boom wipers and cylinder bellows.

80HX Boom Lift Advantages

- Optional oscillating axle provides a smoother ride and better traction for improved rough terrain drive performance
- Extendible axles help reduce stowed width for ease of transport
- Plate steel boom provides longer service life, minimal deflection
- Proportional controls for smoother drive, lift and swing functions
- Platform features a powered rotator for flexible positioning
- JLG's patented Extend-A-Reach 6 ft. (1.83 m) articulating boom section (80HX+6) provides "up & over" or "out & down" access

The JLG 1 & 5 Warranty

JLG Industries, Inc. backs our products with our exclusive "1 & 5" Warranty. We provide coverage on all products for one (1) full year, and cover all specified major structural components for five (5) full years. Due to continuous product improvements, we reserve the right to make specification and/or equipment changes without prior notification. This machine meets or exceeds applicable OSHA Regulations in 29 CFR 1910.67, 1926.453 and ANSI A92.5-1992 as originally manufactured for intended applications.

The JLG Promise

Whether you rent or own a JLG lift, you can expect the best in terms of safety, reliability, productivity and ease of use for the operator.

JLG Industries, Inc.

1 JLG Drive
McConnellsburg, PA 17233-9553
Telephone 717-485-5161
Toll-free in US 877-JLG-LIFT
Fax 717-485-6417
www.jlg.com

